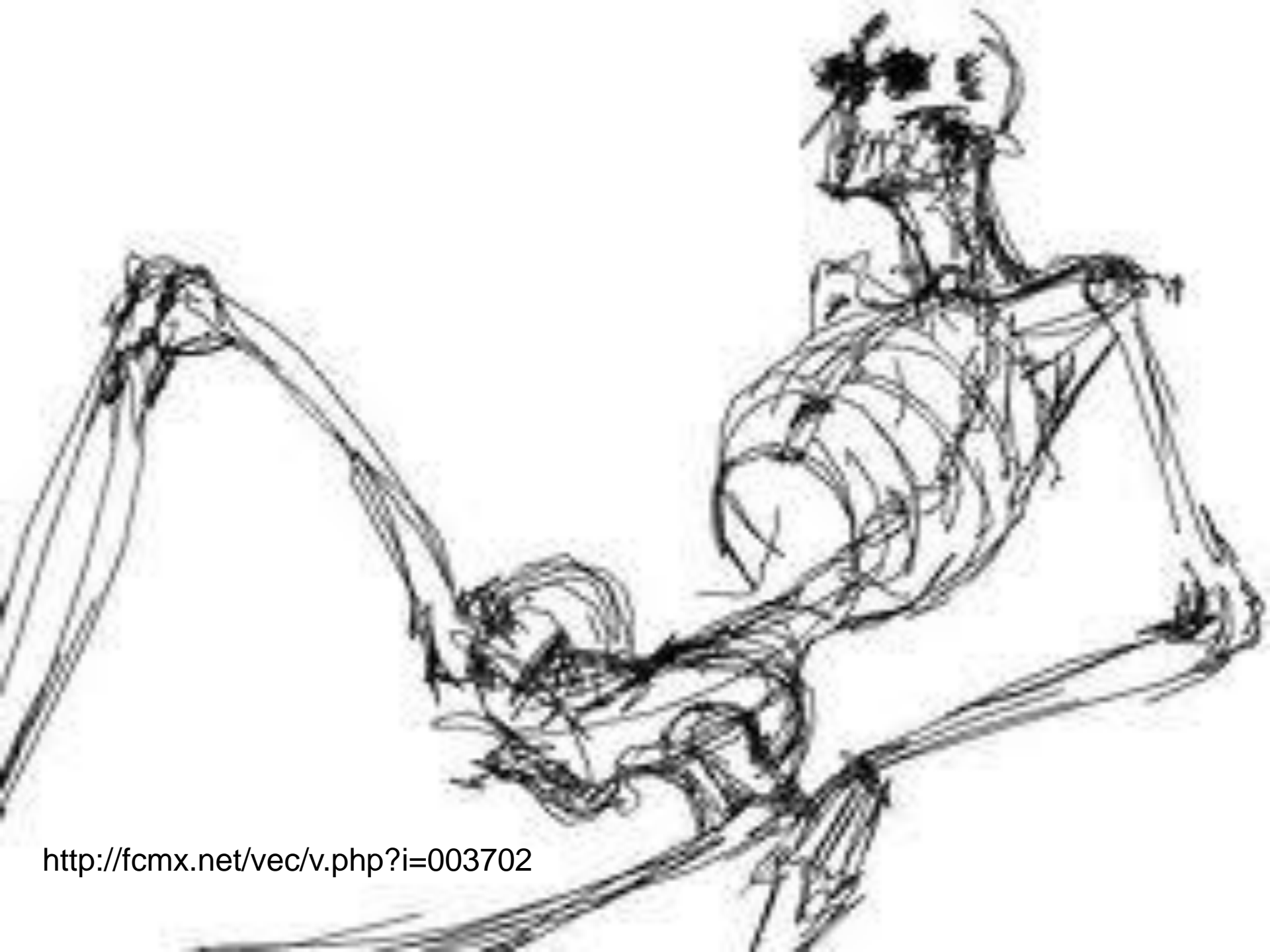


The background is an abstract composition of red and black ink on a light-colored surface. Two large, roughly circular red shapes are the central focus, one positioned above the other. Black ink is used for various expressive lines: a thick, wavy line on the right side, several thin, curved lines, and some vertical lines at the bottom. The overall effect is that of a gestural, hand-drawn artwork.

MANCHA

Y LÍNEA

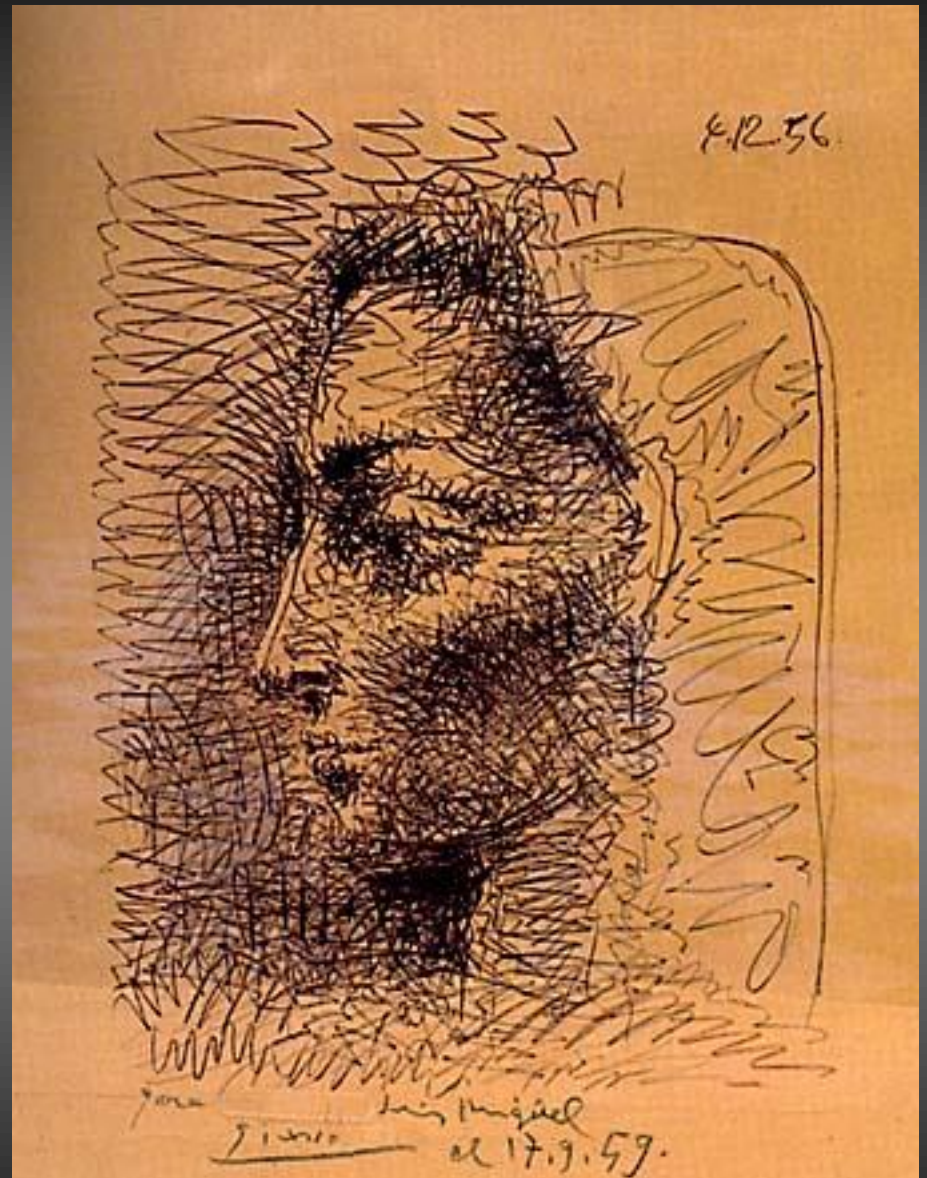


<http://fcmx.net/vec/v.php?i=003702>

Técnicas húmedas

PABLO PICASSO

(1881 – 1973) español



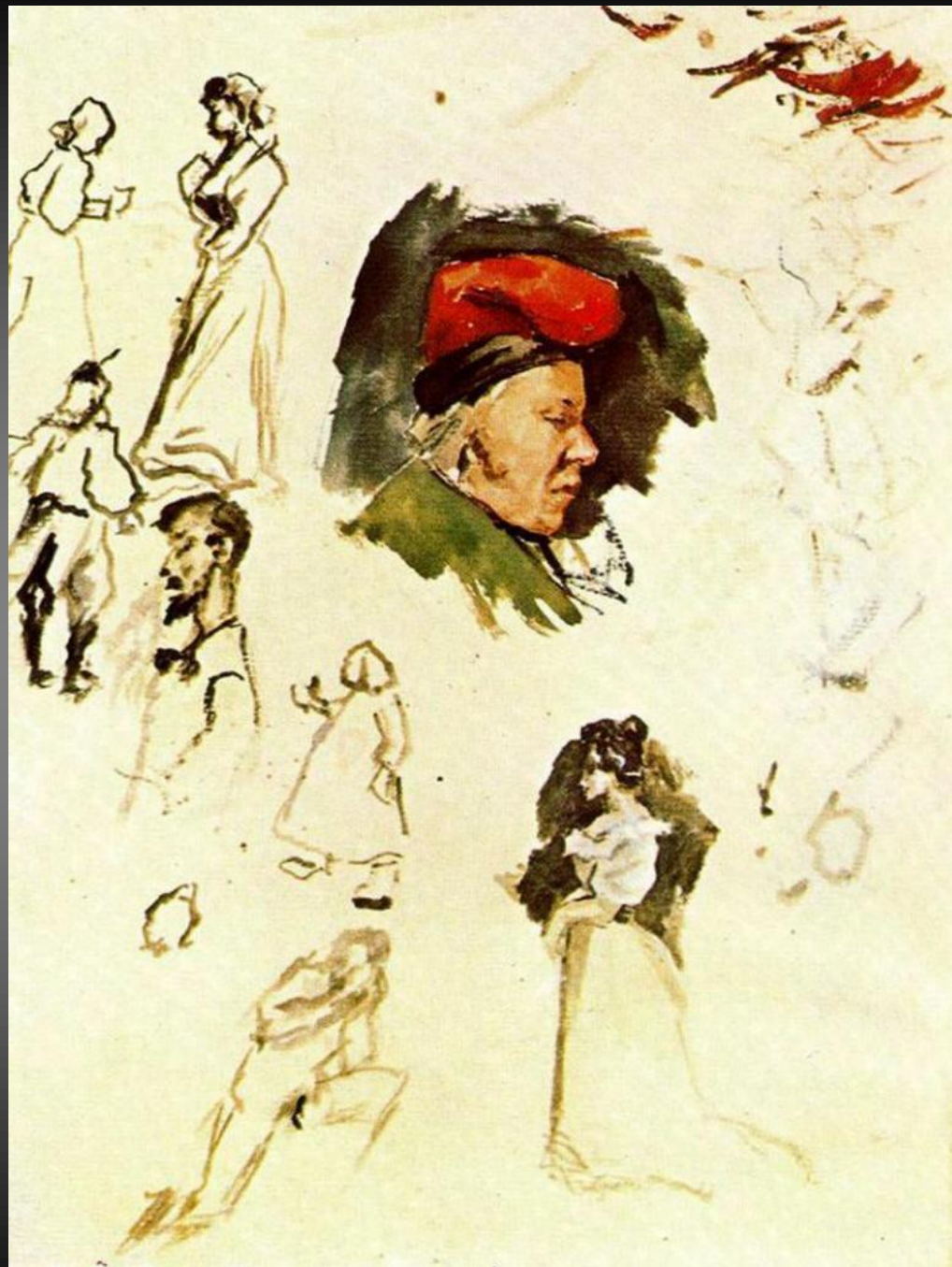
3459.



34
9.







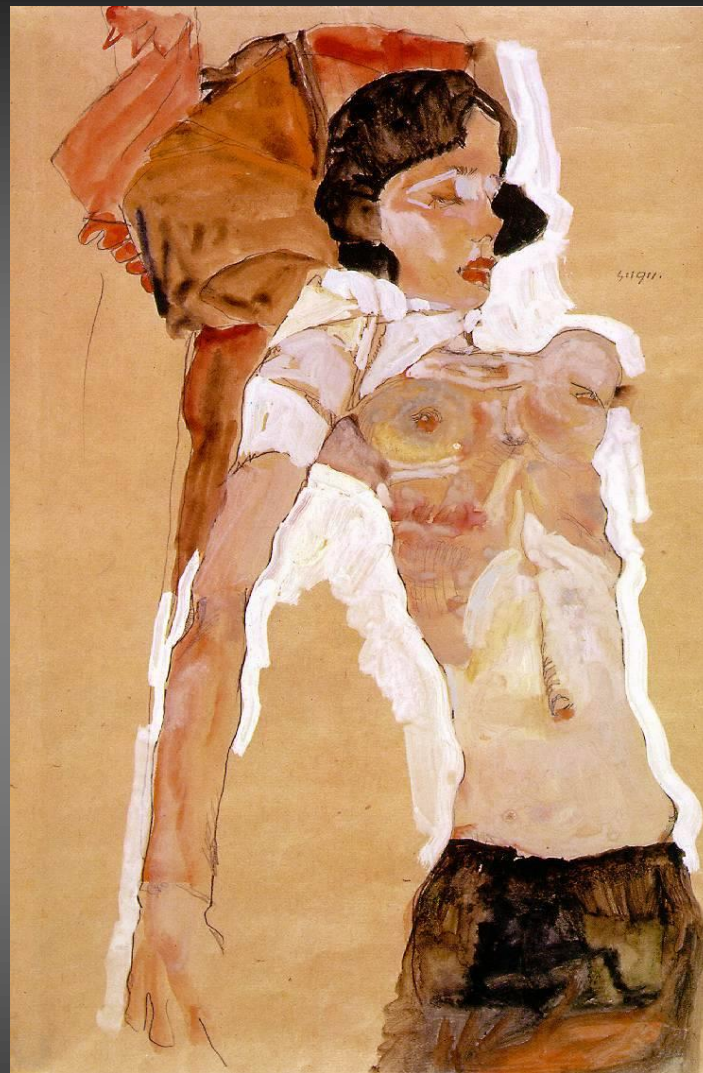


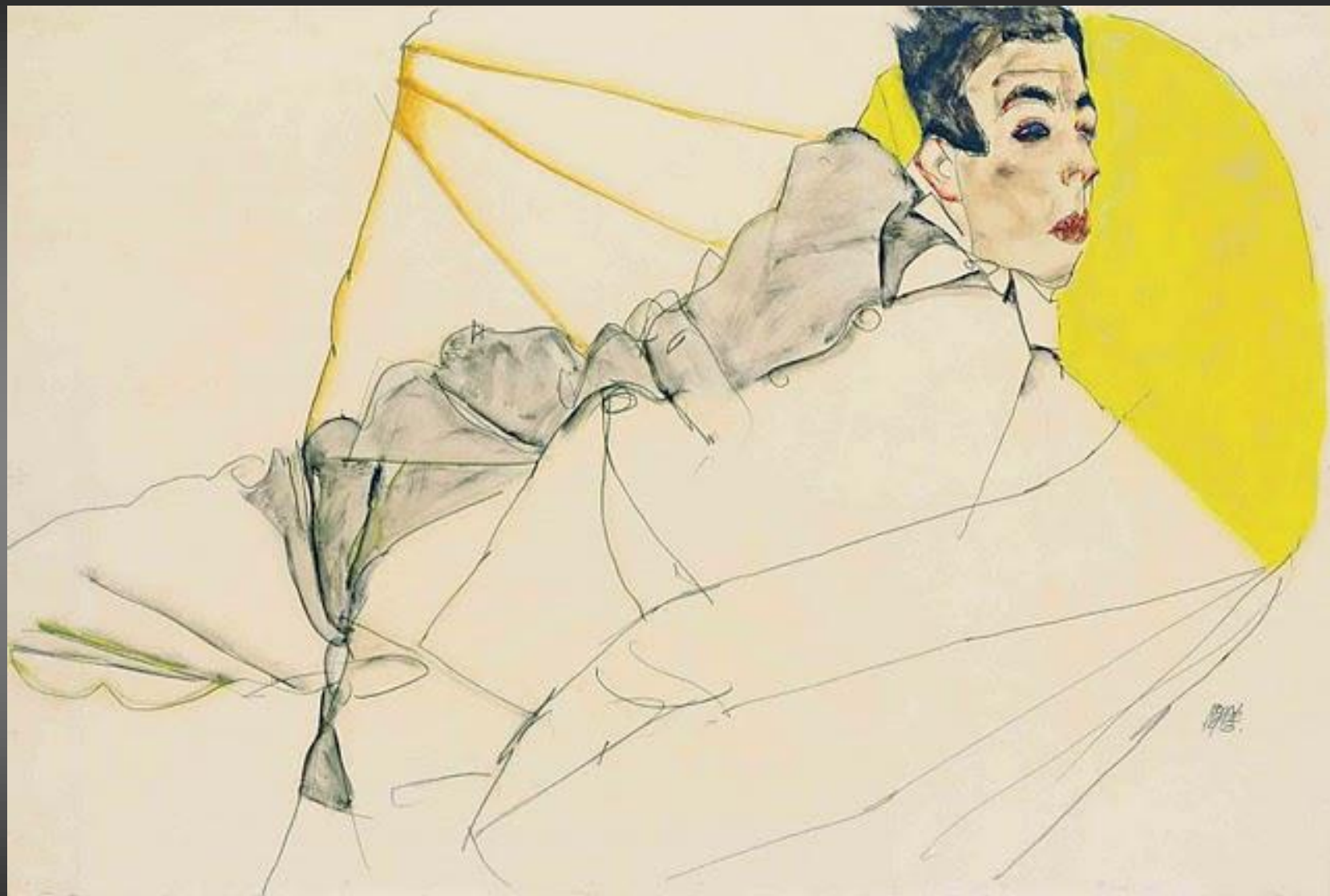
GUSTAVE KLIMT
(1862 – 1918) austríaco



EGON SHIELLE

(1890-1918) austríaco







EDWARD MUNCH

(1863 – 1944) noruego



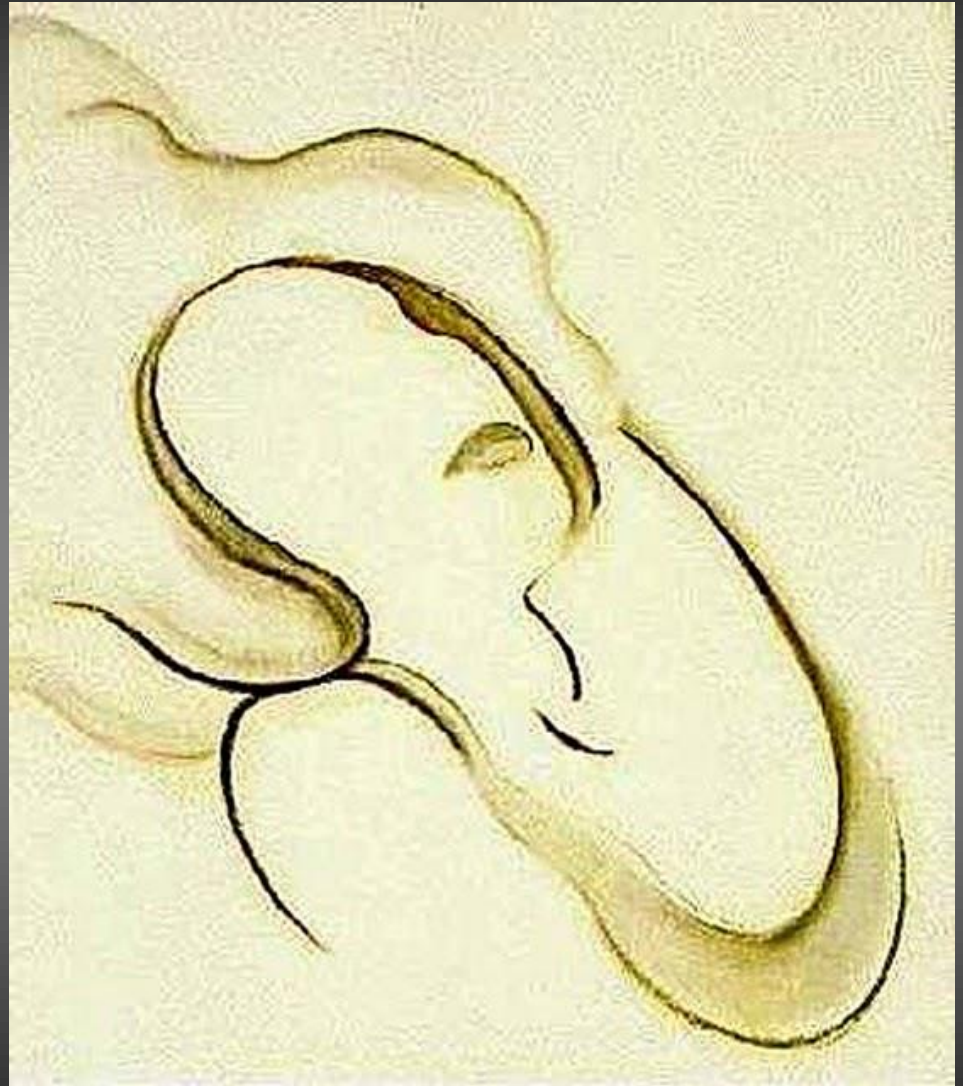
BEN TOUR

(1977) canadiense





GIORGIA O'KEEFFE
(1887 - 1986) estadounidense

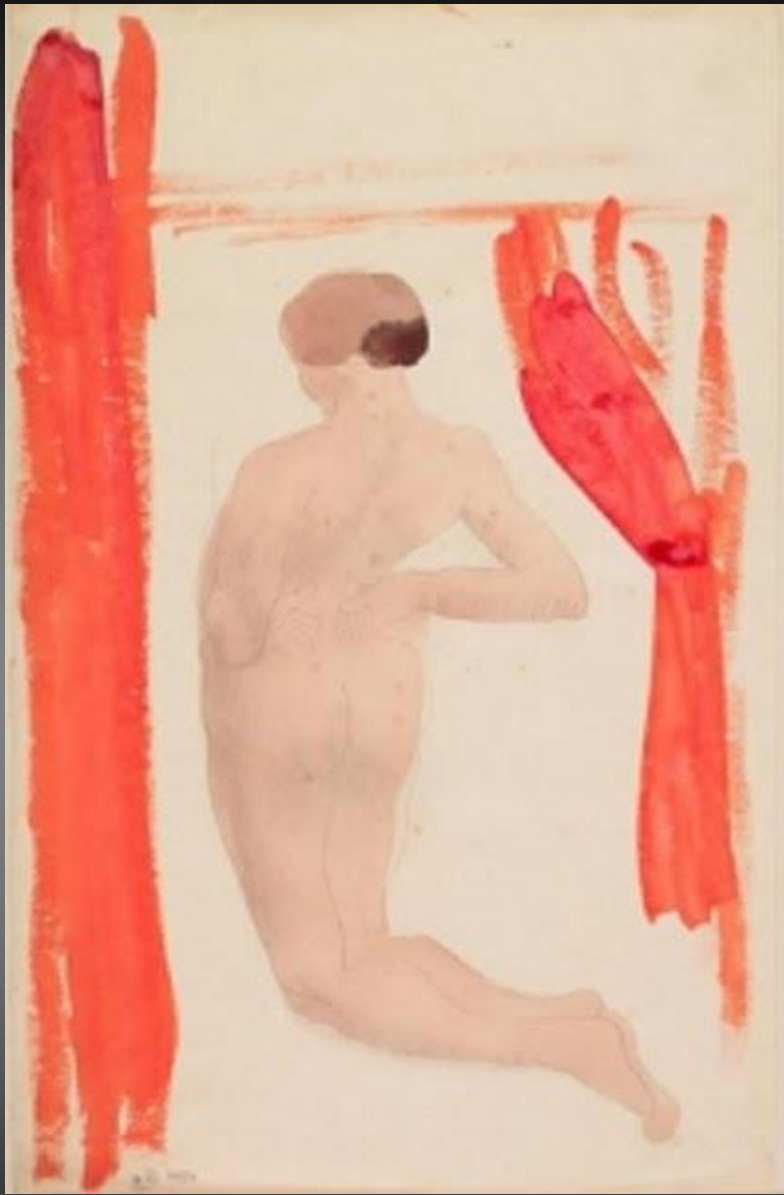




AUGUSTE RODIN

(1840 – 1917) francés
-pintor y escultor-





Técnicas secas



TOULOUSE LAUTREC
(1864 - 1901) francés



Jane Avril, 1892. Cartón, 68x53 cm. Washington, National Gallery.
Unos pocos trazos para sugerir la ropa y el sombrero; la atención está concentrada, como siempre, en la melancolía del pálido rostro.



EDGAR DEGAS

(1834 – 1917) francés



